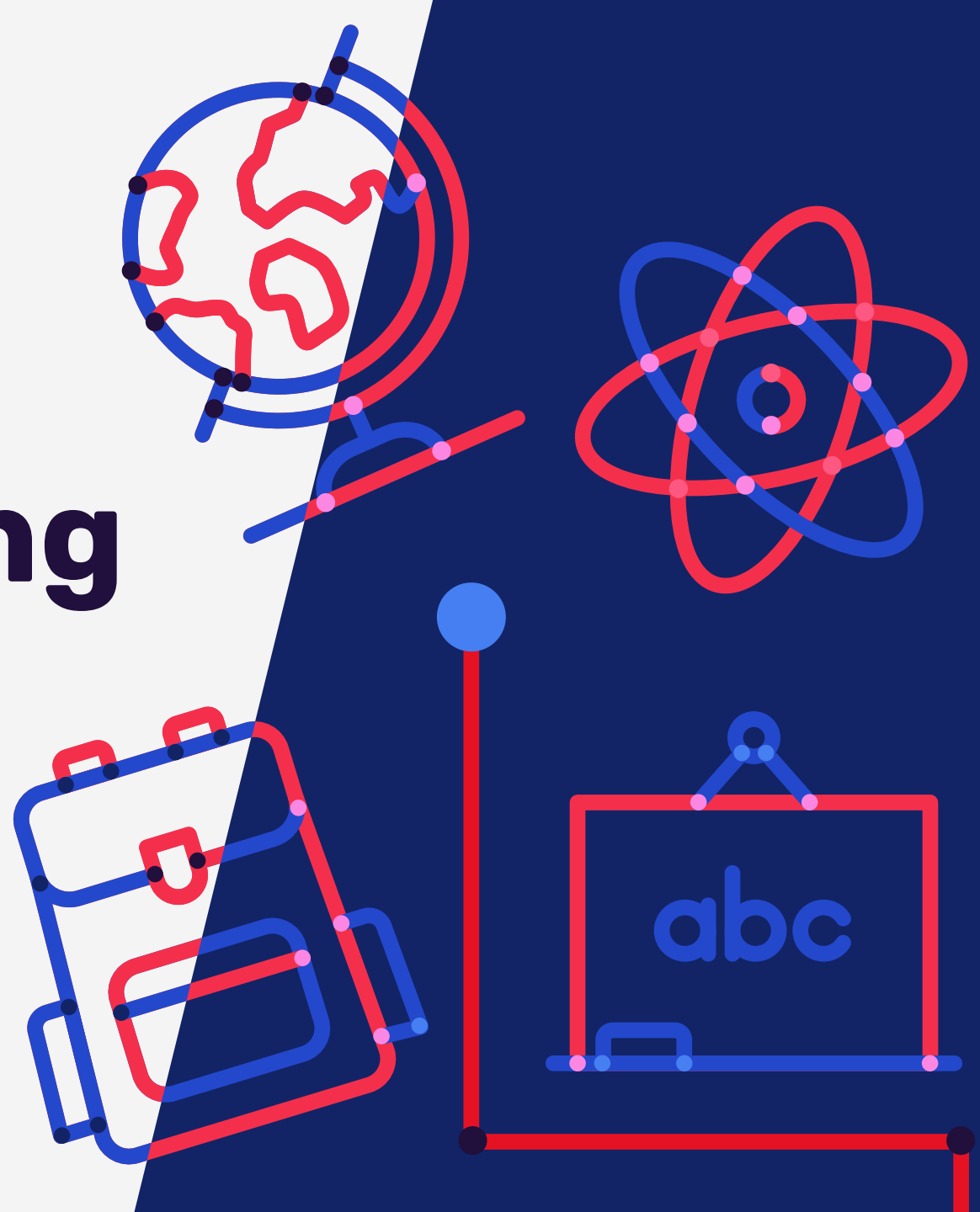


# Guide to tutoring for schools

2023 to 2024 academic year



# National Tutoring Programme

The **National Tutoring Programme (NTP)** launched in November 2020 to provide additional, targeted support for pupils whose education has been most disrupted by the pandemic.

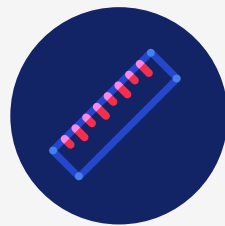
NTP provides schools with the freedom to decide how to provide targeted academic support to pupils who need it most, with a specific focus on pupils from disadvantaged backgrounds and those who are working below the expected standard or grade boundary in a particular subject.

We've listened to feedback from school leaders and stakeholders and announced that, for the 2023 to 2024 academic year, each tuition route will have a 50% subsidy rate.

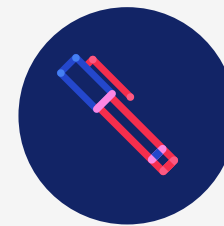
Schools have the flexibility to design a tutoring offer that best meets the needs of their pupils, using one or more of the following approaches:



Tuition partners



Academic mentors



School-led tutoring



## How much funding will my school receive?

To find out how much funding your school will receive, [view your school's allocation on GOV.UK](#).

NTP funding is paid in termly instalments by the Education and Skills Funding Agency (ESFA), directly to academies and non-maintained special schools or to maintained schools via local authorities. You do not need to apply for NTP funding. Local authorities will also receive funding for looked after-children and children they have placed in independent special schools.

## How does the subsidy work?

The tutoring grant is a subsidy to reduce the overall cost of tutoring to the school by 50%. To use this grant, schools are required to pay the remaining 50% of tuition costs through other funding sources, including pupil premium or other core school budgets. Tutoring is an effective use of your [pupil premium](#) and is included in the menu of approaches in the [guidance for school leaders](#).

To ensure the cost of tutoring is not excessive, a maximum hourly per-pupil rate will apply to all NTP tutoring you provide:

- mainstream schools: £18 of which the Department for Education (DfE) subsidy will be £9 (50%)
- special schools: £47 of which the DfE subsidy will be £23.50 (50%)

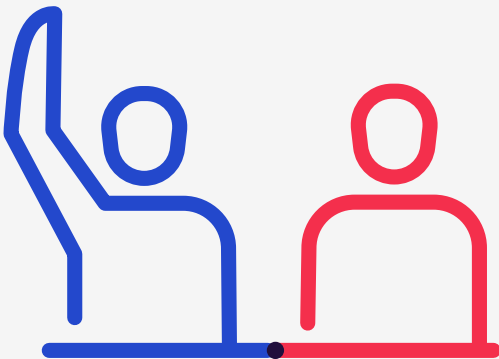


## Which pupils should receive tutoring?

The **guidance for schools** provides information on which pupils schools should consider for tutoring. When identifying pupils for tutoring, you should focus on:

- disadvantaged pupils
- pupils who are working below the relevant test or grade boundary in an applicable subject

Schools continue to have flexibility to offer tutoring to other pupils.



## Keeping track of your tuition

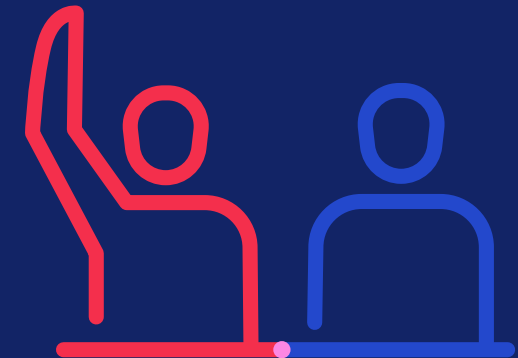
Schools may choose the route, or combination of routes, that works best for their pupils. To keep an accurate record of tuition delivered within your school and to help you monitor the impact on pupils' attainment, you should keep a record of:

- the number of pupil premium-eligible pupils and the number of other pupils who have received tutoring
- how many hours of tutoring you have provided to pupil premium-eligible pupils and to other pupils
- whether tuition was delivered by an employee of the school (including a school-led tutor or academic mentor) or a tuition partner

## Data submissions

For the 2023 to 2024 academic year, schools are asked to submit information on tutoring via:

- the termly school census
- the Year-End Statement – this will be available from the ESFA at the end of the 2023 to 2024 academic year



# Which routes are available?

## Tuition partners

Tuition partners are **external tutoring organisations** that are quality assured by DfE.

They can provide tutors to deliver online or face-to-face tuition to pupils.

Schools can access tutors who specialise in supporting students with special educational needs and disabilities (SEND), English as an additional language (EAL) and those requiring subject-specific support.

Using a tuition partner can bring added value in many areas. For example, some can reduce the administrative burden on schools by helping to plan tutoring, track delivery and evaluate impact.

## Academic mentors

High-quality academic mentors are **recruited and matched to your school** by our delivery partner, Cognition Education. You will employ them to work as full-time, in-house staff members who provide intensive support to pupils who need it most.

If you have a high number of pupils eligible for pupil premium, an academic mentor could be employed to support a large number of pupils and work with your leadership team to help to embed tutoring in your school.

Comprehensive training is provided to academic mentors by Education Development Trust before they join the school.

## School-led tutoring

This offers flexibility for schools to use their own staff to provide tutoring.

You can use existing staff or staff newly engaged for this purpose, such as retired teachers, supply teachers or support staff. This route may be appropriate for pupils with SEND, as you can use tutors who are already familiar with the children and their needs.

Headteachers can **nominate school staff** to complete free, comprehensive training with Education Development Trust to prepare them to deliver tutoring.

This is mandatory for all school-led tutors, except those with qualified teacher status or those who completed NTP training in a previous year.

# Tuition partners

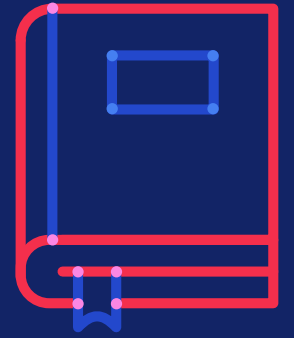
## Why choose a tuition partner?

- NTP tuition partners can offer subject-specific tutors and tutors who specialise in supporting students with SEND and EAL.
- Delivery can be tailored to pupils' needs, for example a one-hour session per week for a full term, or more frequent sessions if appropriate.
- All NTP tuition partners have met a set of quality and safeguarding standards.
- Tutoring can be delivered face-to-face or online which allows flexibility for schools and pupils.
- The tuition partner route allows schools to build partnerships with expert tutoring organisations.

## How to access a tuition partner

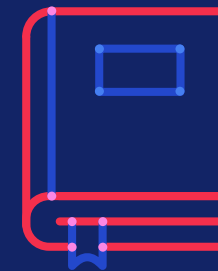
Our [Find a tuition partner service](#) makes it easy to identify a high-quality tuition partner.

You can specify what type of tuition you require, including key stages, subjects, delivery method and any other specific needs, such as SEND support. You can also 'send an enquiry to tuition partners' which makes it quicker to gather and compare tutoring offers from multiple organisations. This reduces the complexity of finding one that meets your school's needs. Approved organisations will respond with a description of the tailored support they can offer your school.



“At secondary level, tutoring is delivered in a range of GCSE subjects. We're able to access a pool of tutors with specialist knowledge through our tuition partners. The organisations we work with are based locally, so they know the community and understand the challenges we face. Another real benefit of working with tuition partners, is that they create a plan to respond to the specific needs of your school.”

Primary school, Derby.



# Academic mentors

## Why choose an academic mentor?

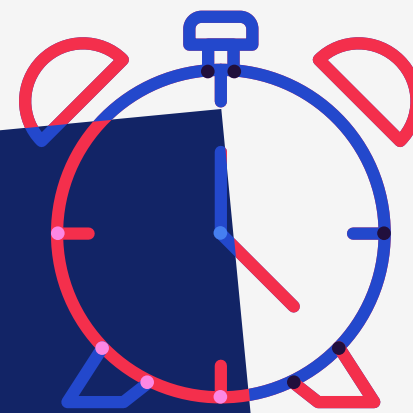
- Academic mentors are salaried members of staff who work alongside your teachers to provide focused, small group tuition.
- Our delivery partner, Cognition Education, carefully selects academic mentors and matches them to schools based on skills and experience.
- Academic mentors undergo intensive training with Education Development Trust before being placed in a school – training consists of various pathways that can be tailored to the skills and experience of each tutor.
- To spread the cost, you could share an academic mentor with another school in your academy trust or local area. This can extend the benefits of tutoring to a higher number of students in need of support.

## How to apply for an academic mentor

All schools can [apply for an academic mentor](#). You can request specific skills or qualifications, such as a background in a particular subject.

“Our academic mentor has had a real positive impact on academic attainment and increased our pupils’ confidence. 93% of our pupils who received tutoring confirmed that they would recommend tutoring to others. Most pupils felt that the support was helping them to make progress in their targeted subject areas.”

Secondary school, Wood Green.





# School-led tutoring

## Why choose school-led tutoring?

- This route allows school leaders to fund tutoring delivered by existing school staff with the appropriate skills and experience. These may be existing staff, such as classroom teachers or teaching assistants, or retired, supply or returning teachers.
- Some pupils are likely to progress more quickly with a tutor who they are familiar and comfortable with.
- Teachers can use their existing knowledge of a pupil's abilities to tailor their tuition to meet the pupil's individual needs.
- Free training is available from Education Development Trust.

## How to deliver school-led tutoring

If you are engaging new staff as tutors, you should make sure that all safer recruitment checks have been completed. It is the responsibility of schools to agree with tutors the terms of their employment.

Schools may use their NTP funding to cover the duties of internal staff released for tutoring, rather than the tutoring itself. However, it must not fund the same role twice or be used to fund any current salaried positions.

Headteachers can **nominate school staff** to complete free training. Training content will vary according to the professional backgrounds of individual

tutors, in recognition that staff hired as tutors will have different levels of experience working in a school setting.

"We are confident in our teaching staff's ability to deliver high-quality tuition. We have full control of the tuition that is delivered to our students, ensuring high-quality teaching is delivered in a safe, secure, and familiar setting. We have also been able to offer greater flexibility to both students and staff, offering the option to participate during both term-time and in school holidays. In turn, this flexibility has meant more students and staff are participating in the programme."

Secondary school, Wednesbury.



# Implementing effective tutoring

Examples of best practice can be found in research undertaken by the NFER, EEF and Ofsted.

“Tuition is more likely to make an impact if it is additional to and explicitly linked with normal lessons.”  
(EEF, 2018)

“Ensuring tutors take time to build relationships with pupils and understand needs is key to the success of tutoring.”  
(EEF, 2022)

“In schools that used effective formative approaches to assessment, tutors and class teachers could immediately see when pupils had made progress.”  
(Ofsted, 2022)

“If one technique was not working (such as direct explanation of a concept), they could often use an alternative method (for instance, modelling on a whiteboard) to aid pupils’ understanding.”  
(Ofsted, 2022)

“Tuition is most likely effective if it is targeted at pupils’ specific needs.”  
(EEF, 2022)

You can view the full reports online:

**[NFER: Implementing effective tutoring \(2022\)](#)**

**[EEF: One to one tuition \(2018\)](#)**

**[EEF: Making a difference with effective tutoring \(2022\)](#)**

**[Ofsted: Independent review of tutoring in schools – phase 1 \(2022\)](#)**

# What training is available for tutors?

For academic mentors and school-led tutors, a high quality and comprehensive training package is provided by Education Development Trust.

Training content will vary according to the professional backgrounds of individual tutors. Examples of the units covered include tutoring implementation best practice, SEND overview and practical application and subject specific study.

Training is mandatory for all academic mentors and school-led tutors without qualified teacher status, unless they completed NTP training in a previous year. Schools can nominate existing tutors for refresher training, if appropriate.

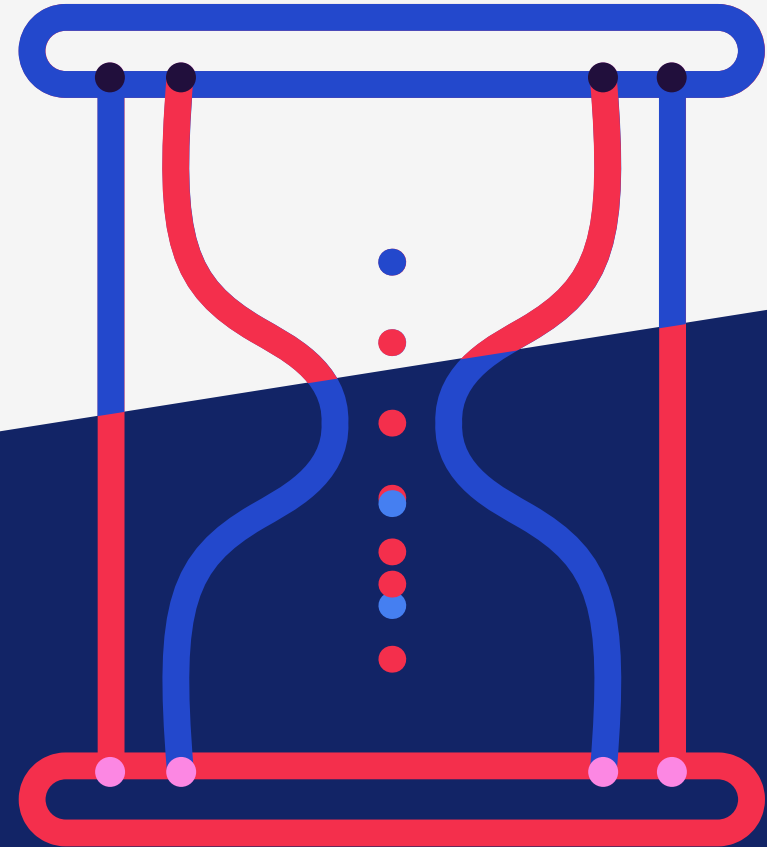


# How to access training

Training is online and self-directed. To request training for staff delivering school-led tutoring, please complete the [training nomination form](#).

All academic mentors are registered for training on completion of the recruitment process.

Training is free for all NTP tutors, but NTP funding can only be used to subsidise tuition hours. It is at the discretion of the school to decide if they want tutors to complete training within school hours, but tutors should be compensated for any time spent training outside their core working hours.





# Continuing arrangements from the previous academic year

If your school is currently using a tuition partner, we encourage you to check **Find a tuition partner** to see if they are still registered as an approved provider. You can only spend NTP funding on an approved NTP tuition partner.

If you would like a tutoring organisation to register as an NTP tuition partner so that you can continue to work with them, please advise the organisation to **contact our delivery partner, Tribal**.

Schools with academic mentors as part of their staff can continue to employ them in the 2023 to 2024 academic year, with 50% of the cost subsidised by the **2023 to 2024 academic year funding allocation**.



# Help and support

For detailed information on NTP, view the **2023 and 2024 guidance for schools on GOV.UK**

**Sign up to our tutoring newsletter** which is sent fortnightly in term time and includes reminders of important actions, updates on NTP guidance and success stories from schools using tutoring to support their pupils

**Find a tuition partner** from our list of quality-assured tutoring organisations

**Apply for an academic mentor** for your school from Cognition Education

**Nominate school staff for training** from Education Development Trust

Contact our dedicated support team if you have any queries about tutoring:

- email **[tutoring.support@service.education.gov.uk](mailto:tutoring.support@service.education.gov.uk)**
- phone **0300 373 0891** (Monday to Friday, 8.30am to 5pm)

