

# National Tutoring Programme

2023/24 academic year



Tell us your tutoring  
plans for 2023/24

# Contents

---

2022/23 Year-End Statement

---

Claremont Primary School

---

Overview of arrangements for 2023/24

---

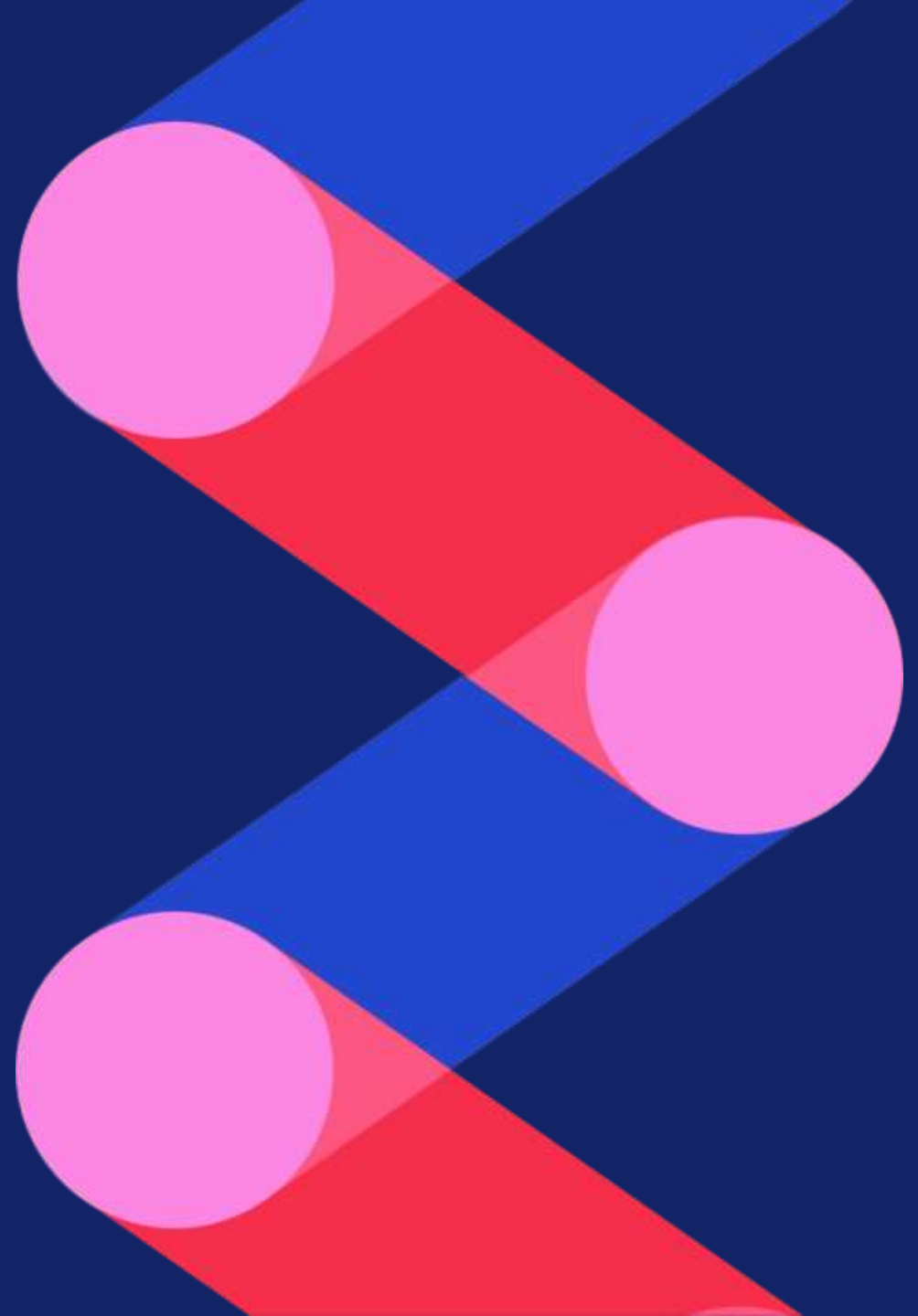
Choosing the right tutoring route

---

Next steps

---

# 2022/23 Year-End Statement



# Important dates

Activity	Date
Year-end statement opens	4 September
Submission deadline	29 September at 2pm
Data reviewed and recovery amounts calculated	October
Lead contact informed of recovery amount	By 17 November
Deadline to query recovery amount, if needed	24 November
Recoveries will be made through LA MSG payments and academies' GAG payments	Late December & Early January



Education & Skills  
Funding Agency

National  
Tutoring  
Programme 

# How to complete your year-end statement

2022 to 2023 academic year

# Before you start

You'll need the following information:

- How much your school received for the 2022/23 academic year
- How much you spent on tutoring from 1 September 2022 to 31 August 2023
- How many hours of tutoring your school delivered
- How many pupils received tutoring

If your NTP grant included allocations for mainstream and SEN-funded pupils in specialist settings, you will need data for both groups.

# Submit your National Tutoring Programme year-end statement

Report your spending and use of the National Tutoring Programme (NTP) funding provided by ESFA in academic year (AY) 2022 to 2023 using this form.

The academic year 2022 to 2023 was from 1 September 2022 to 31 August 2023.

**You must complete and submit your form by Friday, 29 September 2023.**

You are required to submit the form, **even if you did not spend** any of your National Tutoring Programme funding.

## Before you start

### DfE Sign-in

You need to have an account with the DfE Sign-in service to access the form. If you have not used DfE Sign-in before you will need to [create a DfE Sign-in account \(opens in new tab\)](#)

Continue

# NTP year-end statement service for schools

Report your spending and use of the National Tutoring Programme (NTP) funding provided by ESFA in academic year (AY) 2022 to 2023.

[Start now >](#)



# Your allocation

AY 2022 to 2023	£
Funding for pupils in mainstream-funded pupils	45036
Funding for SEN-funded pupils in specialist setting	0
<b>Total NTP funding received</b>	<b>45036</b>

## Do you agree that this was your National Tutoring Programme (NTP) funding for AY 2022 to 2023?

You can still submit your NTP year-end statement return even if you think the funding details are incorrect.

- Yes, this is our NTP allocation
- No, this is not our NTP allocation

Save and continue

**Did you spend any of your NTP grant to deliver tutoring in academic year 2022 to 2023?**

The academic year was from 1 September 2022 to 31 August 2023.

- Yes, we used some or all of the NTP grant to deliver tutoring
- No, we did not use any of the NTP grant to deliver tutoring and expect it to be recovered in full

Save and continue

## What tutoring routes did you use for the National Tutoring Programme in AY 2022 to 2023?

Select all that apply.

- Academic mentors
- Tuition partners
- School-led tutoring

Save and continue

# Total number of pupils tutored

This figure should be calculated based on the number of pupils:

- in key stages 1 to 4 (years 1 to 11)
- who received tutoring subsidised by NTP funding between 1 September 2022 to 31 August 2023 (including both dates)
- who are mainstream-funded pupils

If pupils have received tutoring in multiple subjects, you must count each pupil only once.

**Based on these criteria, how many of your pupils received NTP tutoring in AY 2022 to 2023?**

Save and continue

# Total spent on NTP tutoring

Provide the total amount spent on NTP tutoring in AY 2022 to 2023, including:

- academic mentors
- tuition partners
- school-led tutoring

The academic year was from 1 September 2022 to 31 August 2023.

**The figure you enter should represent the full cost to your school, including your DfE funding and your school's contribution.**

The NTP grant covers 60% of the cost of tuition subject to a maximum hourly per-pupil rate. If you used all your funding from DfE, the figure you enter will be higher than your school's allocation.

If tutoring sessions were cancelled at short notice for reasons beyond your control, you can still include the costs.

## How much did your school spend on NTP tutoring in AY 2022 to 2023?

For mainstream-funded pupils

£	<input type="text"/>
---	----------------------

Save and continue

# Total tutoring hours delivered

Provide a figure for the total number of hours of NTP tutoring your school delivered in AY 2022 to 2023.

The academic year was from 1 September 2022 to 31 August 2023.

This figure should include:

- every hour delivered per pupil (for example, if one tutor delivered 15 hours of tuition to a group of 3 pupils, record this as 45 hours) via any NTP route such as academic mentors, tuition partners or school-led tutoring
- hours that were paid for but not delivered, such as cancelled sessions at short notice due to pupil absence or sickness

**Based on these criteria, how many hours of NTP tutoring did you deliver in AY 2022 to 2023?**

For mainstream-funded pupils

<input type="text"/>	hours
----------------------	-------

Save and continue

# Your hourly rate of NTP tutoring

We calculate the average hourly cost using the total spent on NTP tutoring divided by the total number of tutoring hours delivered.

Based on the information you provided on the total spend and the total number of hours delivered, your hourly rate of NTP tutoring works out as:

## **For mainstream-funded pupils (£ per hour)**

**14.63**

If this average is £18 or above for mainstream pupils, we fund £10.80 for each hour delivered. If the average is below £18 for mainstream, we fund 60% of the average total cost up to your allocation.

If this seems inaccurate, you may wish to re-check your records and the figures you've inputted on total spend and total number of hours delivered.

Remember that the total number of hours delivered should be recorded as per pupil, per hour. So, if you delivered 15 hours of tutoring to 3 pupils, you would record this as 45 hours.

Save and continue

# Recovery Premium Grant

Recovery Premium Grant (RPG) is additional funding to provide further education recovery support on top of the subsidised NTP offer. Your school's contribution must have been met from sources of income other than those provided through the RPG, such as the Pupil Premium Grant (PPG).

View the [Recovery Premium Grant Conditions \(opens in new tab\)](#)

Under the RPG conditions of grant, schools must not use the RPG to meet their portion of the costs of NTP tutoring.

We may contact you to discuss this.

**I confirm that the school has not used the Recovery Premium Grant to fund tutoring provided through the National Tutoring Programme**

Yes  No

Save and continue



## Are you planning to deliver tutoring through the National Tutoring Programme (NTP) in AY 2023 to 2024?

The academic year started 1 September 2023 and the subsidy is 50%. Your response will not affect your [NTP allocation](#) or receipt of the funding. This is just to give us an indication of your interest.

- Yes, we are delivering NTP tutoring in AY 2023 to 2024
- Maybe, we have not decided if we will deliver NTP tutoring in AY 2023 to 2024
- No, we are not delivering NTP tutoring in AY 2023 to 2024

Save and continue

# Agree to the declarations

I confirm that,



The details provided in this form relate only to NTP funding in accordance with the guidance published by DfE and ESFA

View the [NTP guidance \(opens in new tab\)](#)



The NTP funding has been spent according to the conditions of grant

View the [conditions of grant \(opens in new tab\)](#) for the National Tutoring Programme (NTP).



I confirm I have read and agree to the privacy statement which outlines how ESFA will use the data I am providing

View the [privacy notice on Gov.UK \(opens in new tab\)](#)



The details I have provided are correct to the best of my knowledge



I have the authority to submit this on behalf of my school

Save and continue

# Email address

## Enter your business email address

We'll send confirmation of your submission here. We'll also send the details of any funding recovery to this email address by 17th November.

## Should we send your details of any funding recovery to anyone else?

Answer yes if there is a risk that your email address might not be active in a few months' time when the recovery statements are sent out or to advise your Finance Manager.

Yes  No

Save and continue

## Enter a second business email address

We'll send a copy of your details of any funding recovery here.

Save and continue

# Check your answers before sending


UKPRN	10015766	
<b>Do you agree that this was your National Tutoring Programme (NTP) funding for AY 2022 to 2023?</b>	Yes, this is our NTP allocation	<a href="#">Change</a>
<b>Did you spend any of your NTP grant to deliver tutoring in academic year 2022 to 2023?</b>	Yes, we used some or all of the NTP grant to deliver tutoring	<a href="#">Change</a>
<b>What tutoring routes did you use for the National Tutoring Programme in AY 2022 to 2023?</b>	Tuition partners, School-led tutoring	<a href="#">Change</a>
<b>Based on these criteria, how many of your pupils received NTP tutoring in AY 2022 to 2023?</b>	270	<a href="#">Change</a>

---

<b>For mainstream-funded pupils (£)</b>	60000	<a href="#">Change</a>
<b>How many hours of NTP tutoring did you deliver in AY 2022 to 2023? For mainstream-funded pupils (hours)</b>	4100	<a href="#">Change</a>
<b>For mainstream-funded pupils (£ per hour)</b>	14.63	
<b>I confirm that the school has not used the Recovery Premium Grant to fund tutoring provided through the National Tutoring Programme</b>	Yes	<a href="#">Change</a>

---

<b>Are you planning to deliver tutoring through the National Tutoring Programme (NTP) in AY 2023 to 2024?</b>	Yes, we are delivering NTP tutoring in AY 2023 to 2024	<a href="#">Change</a>
<b>Declaration 1</b>	The details provided in this form relate only to NTP funding in accordance with the guidance published by DfE and ESFA	<a href="#">Change</a>
<b>Declaration 2</b>	The NTP funding has been spent according to the conditions of grant	<a href="#">Change</a>
<b>Declaration 3</b>	I confirm I have read and agree to the privacy statement which outlines how ESFA will use the data I am providing	<a href="#">Change</a>
<b>Declaration 4</b>	The details I have provided are correct to the best of my knowledge	<a href="#">Change</a>
<b>Declaration 5</b>	I have the authority to submit this on behalf of my school	<a href="#">Change</a>
<b>Enter your business email address</b>	head@exampleschool.org.uk	<a href="#">Change</a>
<b>Should we send your details of any funding recovery to anyone else?</b>	Yes	<a href="#">Change</a>
<b>Enter a second business email address</b>	deputyhead@exampleschool.org.uk	<a href="#">Change</a>

 **You must click 'Submit' to send us your year-end statement so that it can be processed.**

**Submit**

Save summary as PDF

# Submission complete

Your reference number  
**Fs9NTyuVBX**

## Important

**Take a note of your submission reference number for raising queries related to your submission.**

### Email confirmation

We'll send an email confirmation to the business email address shared by you in the form.

We'll contact you directly if we have any questions or need additional information.

### To view or correct your submission

Return to the [NTP year-end statement service](#) to view or change your answers. You can resubmit until 2:00 pm on Friday, 29 September 2023, when this service closes.

### If you have questions

You can contact us at [tutoring.support@service.education.gov.uk](mailto:tutoring.support@service.education.gov.uk)

### Next steps

Once submissions have been reviewed, we will contact you with details of any recoveries.

If you have not received details of your recovery by 17th November, please contact [tutoring.support@service.education.gov.uk](mailto:tutoring.support@service.education.gov.uk)



## For more information

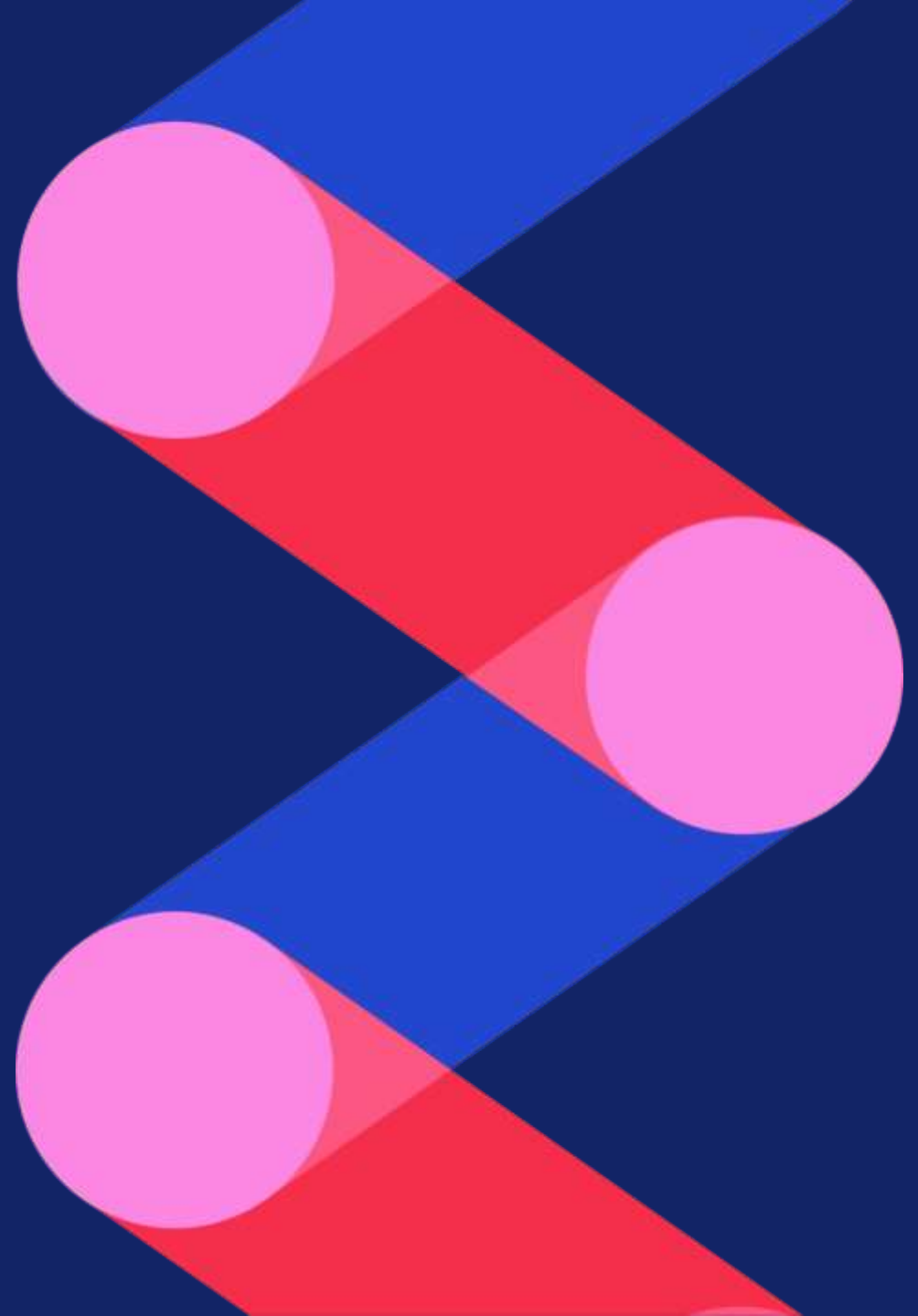
### View the year-end statement guidance:

- Visit [www.gov.uk/government/publications/national-tutoring-programme-ntp-allocations-for-2022-to-2023-academic-year](https://www.gov.uk/government/publications/national-tutoring-programme-ntp-allocations-for-2022-to-2023-academic-year)

### Contact us

- For technical queries, visit <https://esfahelp.education.gov.uk>
- For other tutoring queries, email [tutoring.support@service.education.gov.uk](mailto:tutoring.support@service.education.gov.uk)

# Claremont Primary School



# Claremont Primary School

- Community, mixed school in inner city Manchester
- 606 pupils enrolled, of which 58% are eligible for free school meals
- 59% of the pupils are in receipt of the pupil premium
- 80% of the children speak English as an additional language and 99% are from a minority ethnic background

# The NTP routes we use

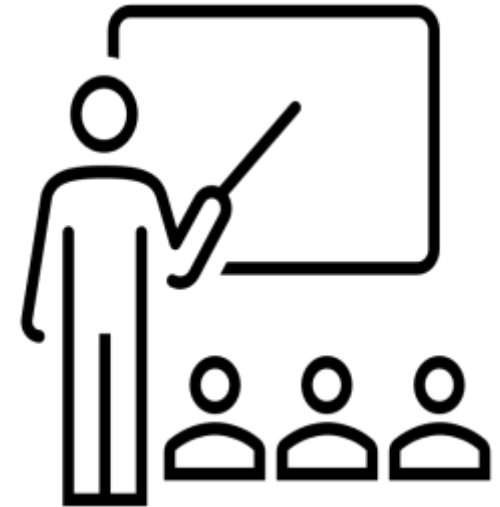
We have used the **tuition partner and school-led tutoring** routes.

## Tuition Partners

- **In school tutoring (Tutor Trust):** Reading and Maths tuition (1:3), 15 weeks for 192 children from Year 3 to Year 6.

## School-led tutoring

- **Reading support programme** led by school-based staff to run FFT Lightning Squad tuition before school with children from Y1-Y6.



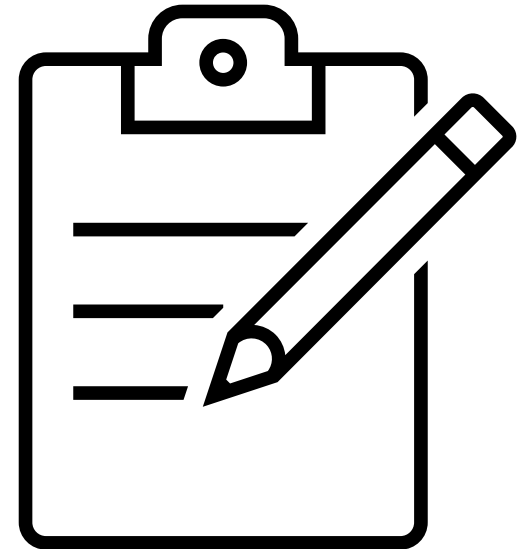
# Planning

When planning tuition programmes for our students we consider how to:

- Ensure high quality education for all
- Close the attainment gap against national standards.
- Ensure more all children make at least good progress in reading, writing and mathematics

We also provide:

- A dedicated tuition space for the sessions
- High-quality learning equipment



# Selecting pupils

## How do we select pupils for NTP tuition?

- Analyse pupil data
- Pupil progress meetings with staff
- Identify pupils who require extra targeted support
- Target children where a lack of confidence in a subject is their main barrier to achieving

## Overcoming challenges

- Session organisation to avoid children missing the same lessons in class.

# Impact of tutoring

## **Tutor Trust**

- increase in number of Year 6 children achieving the expected standard in reading and maths
- in Year 3, Year 4 and Year 5 the number of children who had tutoring that were working at Age Related Expectation (ARE) increased by 30-40% from start to the end of the year
- children who have received tutoring have an increased confidence in class across the curriculum
- tutors use teacher feedback to plan future tutoring sessions

## **FFT – Lightning Squad with school-based staff**

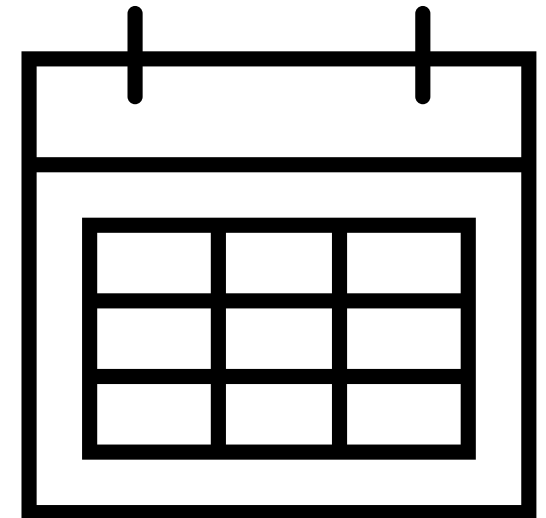
- increase in number of Y1 and Y2 children passing the phonics screening check
- increased confidence in reading for older children with younger reading ages
- increase in reading ability of children in KS2 in both fluency and comprehension

# Plans for 2023/24

This year we will continue to work with Tutor Trust as a tuition partner. We will also continue with school-led tutoring using FFT Lightning Squad who will provide a tutor.

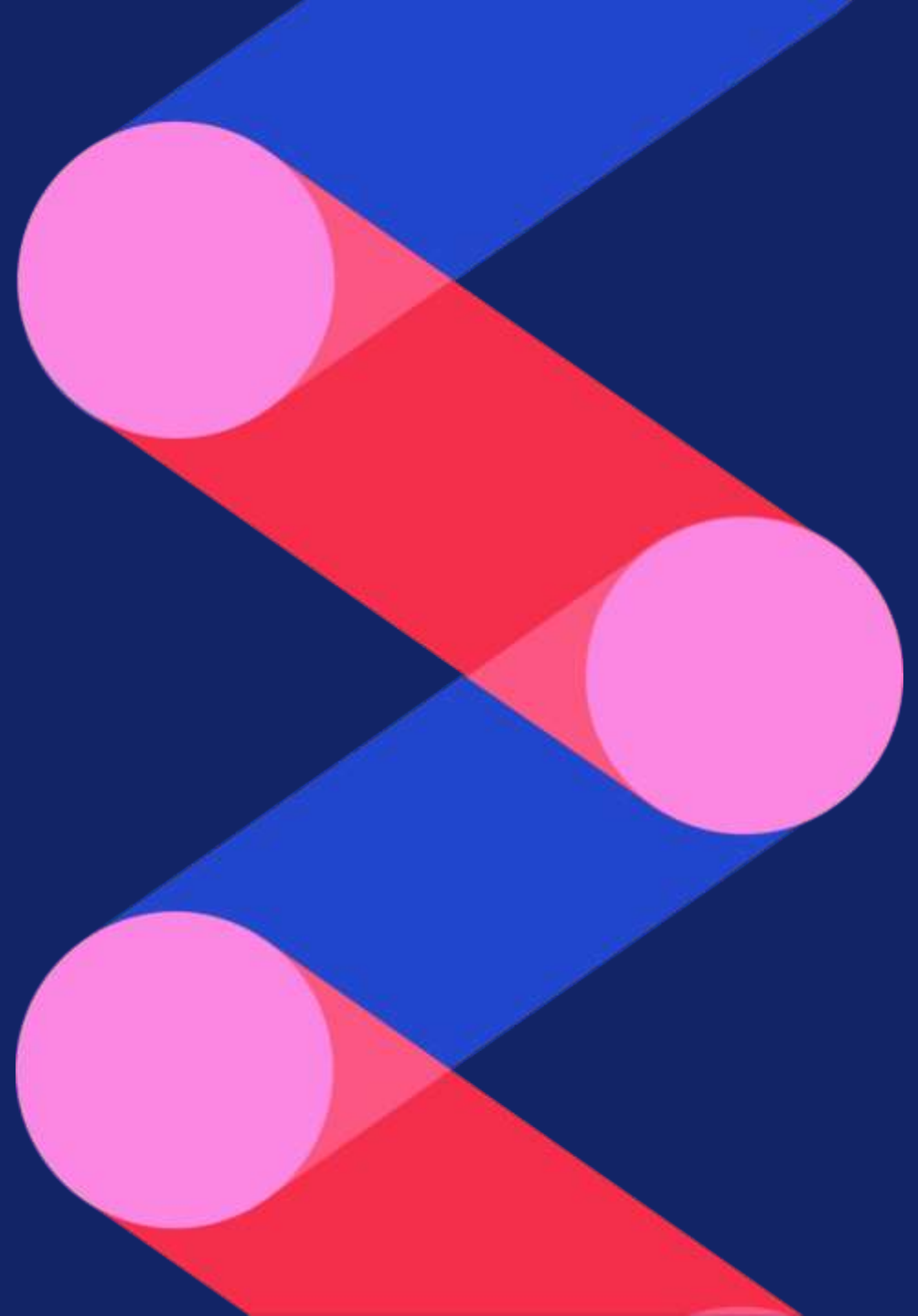
We will work with pupils across key stage 1 and key stage 2, including those with SEND

Autumn term	Spring term	Summer term
<ul style="list-style-type: none"> <li>• FFT Lightning Squad – Reading and Phonics tuition – for up to 42 children across Years 1 – 4.</li> <li>• Tutor Trust – Reading and Maths tuition – for up to 24 children per year group across KS2.</li> </ul>	<ul style="list-style-type: none"> <li>• FFT Lightning Squad – Reading and Phonics tuition – for up to 42 children across Years 1 – 4.</li> <li>• Tutor Trust – Reading and Maths tuition – for up to 24 children per year group across KS2.</li> </ul>	<ul style="list-style-type: none"> <li>• FFT Lightning Squad – Reading and Phonics tuition – for up to 42 children across Years 1 – 4.</li> <li>• Tutor Trust – Reading and Maths tuition – for up to 24 children per year group across KS2.</li> </ul>





# Overview of arrangements for 2023/24



# Overview for 2023/24

## Operating model consistency

- 3 tutoring routes: tuition partners, academic mentors and school-led tutoring
- No change to subjects, group sizes and recommended tutoring arrangements
- Delivery partners remain the same (Cognition, EDT and Tribal)
- Schools continue to have flexibility to design a tutoring offer that works for them

## Tutoring arrangements

- Existing focus remains on targeting disadvantaged pupils
- New focus also on pupils who are working below the expected standard or grade boundary in an applicable subject
- Schools can still use their discretion to offer tutoring to any pupil

## funding

- 50% subsidy – NTP grant will cover half of a school's tutoring costs, up to maximum hourly rates and individual school allocations
- While the subsidy is higher than originally planned for AY2023/24, total funding has not increased – schools must check allocations
- NTP calculator tool will help schools plan and track costs

# Funding for 2023/24

- State-funded schools receive **one tutoring grant** paid in termly instalments to contribute to 50% of tutoring costs
- Funding is provided to mainstream and special schools based on their pupil premium students:
  - Mainstream schools - a minimum of £67.50 per PP-eligible pupils
  - Special schools - a minimum of £176.25 per PP-eligible pupil

## Comparison of subsidy rates



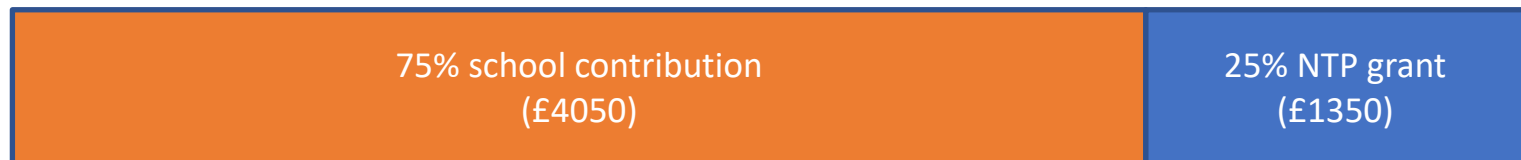
X 20 (mainstream PP students)

Under **last year's** subsidy arrangement (AY2022/23):



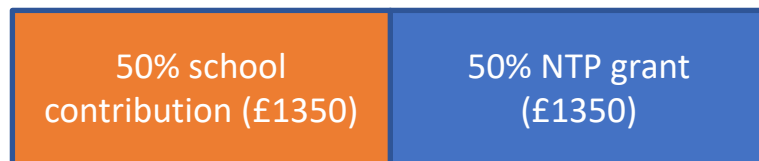
= **£5,400** total tutoring budget (unless school contributes more)

Under the **previously planned** arrangement for AY2023/24:



= **£5,400** total tutoring budget (unless school contributes more)

Under the **current** subsidy arrangement (AY2023/24):



= **£2,700** total tutoring budget (unless school contributes more)

# Funding example

- Your NTP funding allocation is **£2160** (based on 32 PP+ students\*)
- You deliver tutoring to **30** students who are working below the grade boundary in Maths and English
- You arrange **12 hours** of tutoring for **7 groups** and pay the tutor **£48** per hour

Group	Pupils	Hours of tutoring	Pupil hours (pupils X hours)	Cost per hour	Cost per group (hours of tutoring X cost per hour)
1	4	12	48	£48	£576
2	4	12	48	£48	£576
3	4	12	48	£48	£576
4	4	12	48	£48	£576
5	4	12	48	£48	£576
6	4	12	48	£48	£576
7	6	12	72	£48	£576
<b>Total</b>	<b>30</b>	-	<b>360</b>	-	<b>£4032</b>

The average hourly rate per pupil is £11.20 (£4032 / 360 hours) which is less than the £18 cap, so the 50% subsidy applies to £4032.

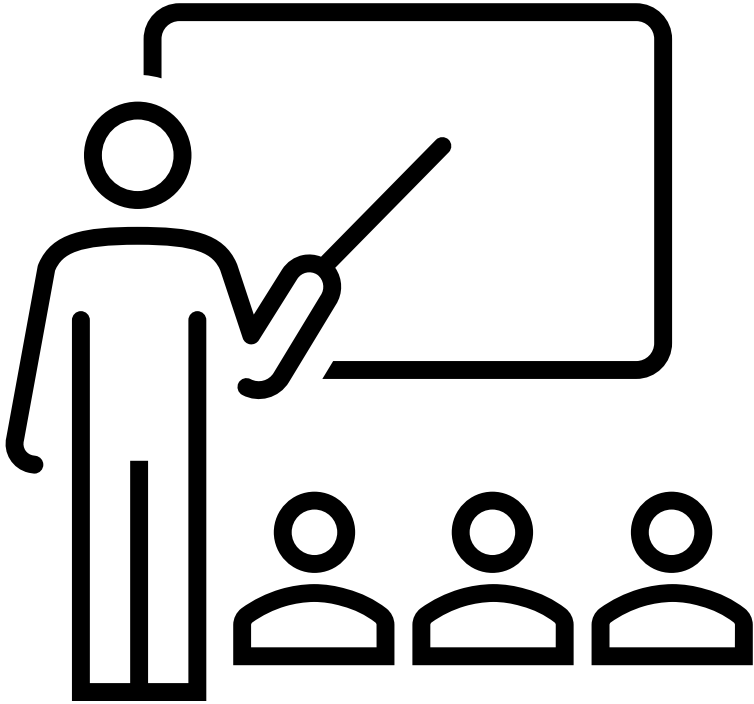
DfE will pay 50% of £4032 = £2016

**Tutoring for 30 students would cost your school £2016**

\*please note that while funding is based on PP numbers, schools can use NTP funding for any pupils

Month	How many pupils did you give tutoring to?	How many hours of tutoring did you provide?	How much did you spend?
September	4	48	£576.00
October	4	48	£576.00
November	4	48	£576.00
December	4	48	£576.00
January	4	48	£576.00
February	4	48	£576.00
March	6	72	£576.00
April			
May			
June			
July			
August			
<b>Cumulative totals to date</b>	<b>30</b>	<b>360</b>	<b>£4,032.00</b>
<b>Step 4: Check your cumulative spending totals month-to-date</b>			
Projected amount DfE will pay towards tutoring		£2,016.00	
Projected amount you'll need to pay towards tutoring		£2,016.00	
Projected per pupil per hour rate		£11.20	
<b>Step 5: View your projected underspend amount</b>			
Projected underspend when you've completed your tutoring		£144.00	
<b>Step 6: Year-end statement information</b>			
You can use these figures when filling in your year-end statement between June and September 2024.			
<b>Total amount spent on tutoring</b>		£4,032.00	
<b>Number of pupils who received tutoring</b>		30	
<b>Hours of tutoring provided</b>		360	

# Supporting pupils with SEND



To improve the tutoring experience and enhance academic outcomes for these pupils, you could consider the following:

- request a tuition partner with SEND specialists
- maintain small group sizes of 1:1 or 1:2
- align tutoring with EHCP plans
- ensure learning is tailored and targeted to meet the individual needs of each pupil

# Choosing the right tutoring route



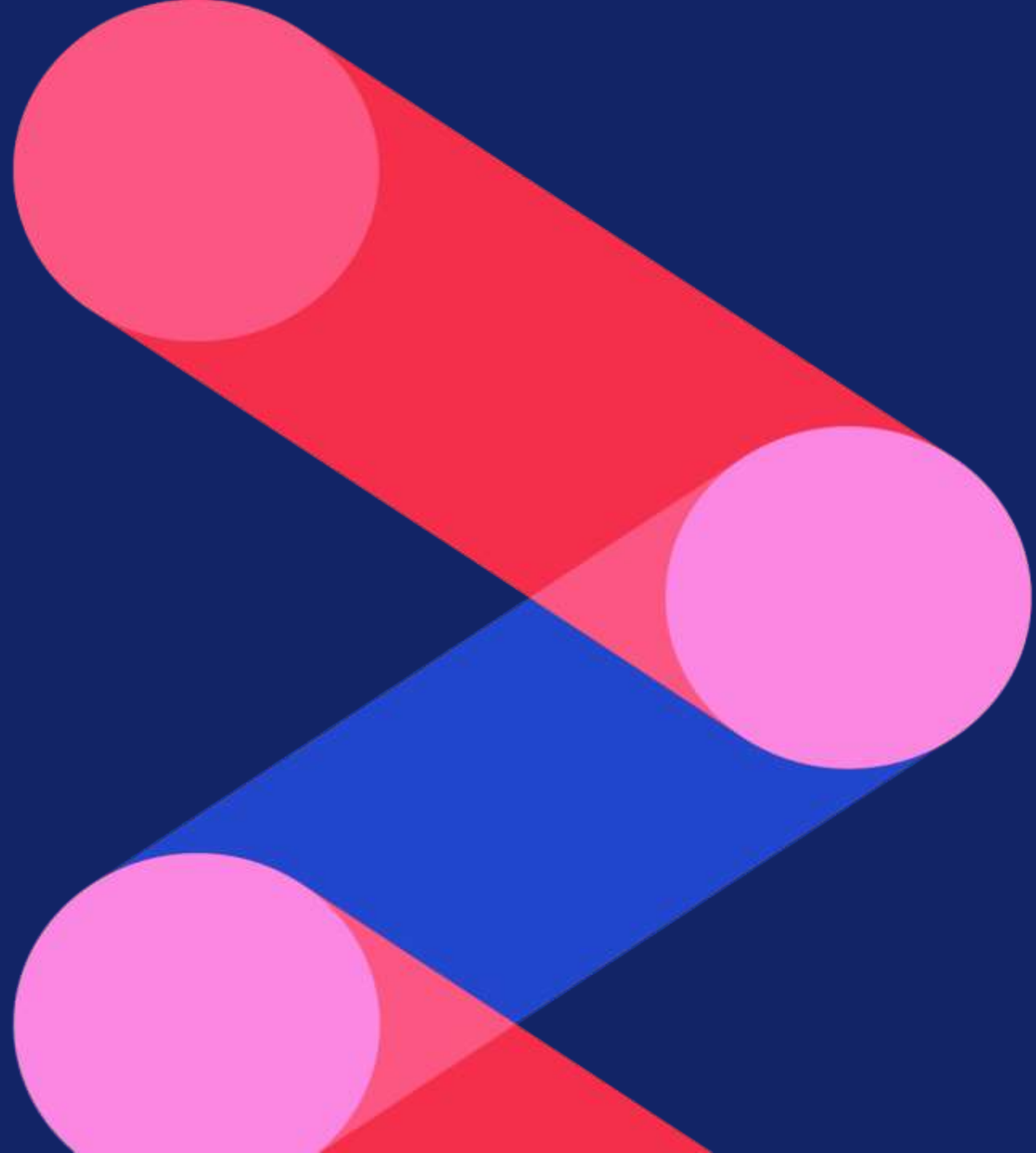
# Three tutoring routes

To deliver tuition schools can continue to use one, or a combination, of these routes:

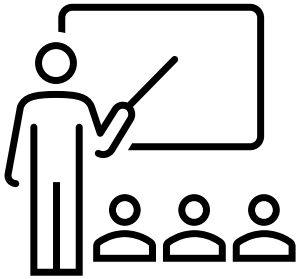
Tuition partners	Academic mentors	School-led tutoring
<p>Provide tutors from external tutoring organisations quality assured by Tribal Group</p> <p>Flexible delivery, tuition available face-to-face or online</p> <p>Specialist support tailored to pupils' needs</p>	<p>Full or part time in-house members of staff providing intensive support to pupils who need it the most</p> <p>User centred recruitment supported by Cognition</p> <p>Comprehensive training provided by Education Development Trust</p>	<p>Allows flexibility for schools to provide tutoring resource</p> <p>Can be existing or new staff, retired teachers, supply teachers, support staff</p> <p>Comprehensive training available from Education Development Trust</p>



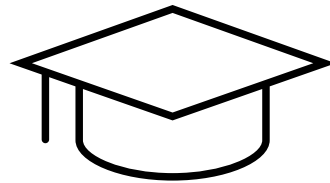
# Academic mentors



# Academic Mentors



- Tutoring in **one or multiple subjects**
- **Working closely with teachers** to ensure that tutoring content directly supports classroom curriculum
- **Planning tutoring sessions** and providing **feedback** on pupil progress
- Ability to provide tutoring during **school holidays**, if requested by schools



- **Highly qualified** individuals who receive **intensive training**
- Three A-Levels at grade A\* to C (or equivalent, such as BTECs or T-levels) and/or a degree
- GCSE English and mathematics at grade 4 or C (or international equivalent)



- The minimum salary for an Academic Mentor is £19,000 per year, or £21,000 for those with a university degree
- Schools can offer higher salaries at their discretion and at their own cost
- DfE will subsidise **50% of the hourly rate** for the tuition provided by the Academic Mentor, subject to the maximum hourly per pupil rates

# Cognition Education

## Recruit high-quality Academic Mentors

- Large talent pool of Mentors (1000+):
- Fast, efficient and free
- Varied levels of experience.
- Local campaigns to attract active and passive candidates
- Simple processes, with one specialist single point of contact
- Reassurance that basic employment checks have been completed, and candidate onboarded with EDT before starting

Step 1: Register your interest

Step 2: Onboarding call made by one of our School Relationship Officers

Step 3: Matching and compliance

Step 4: Interview

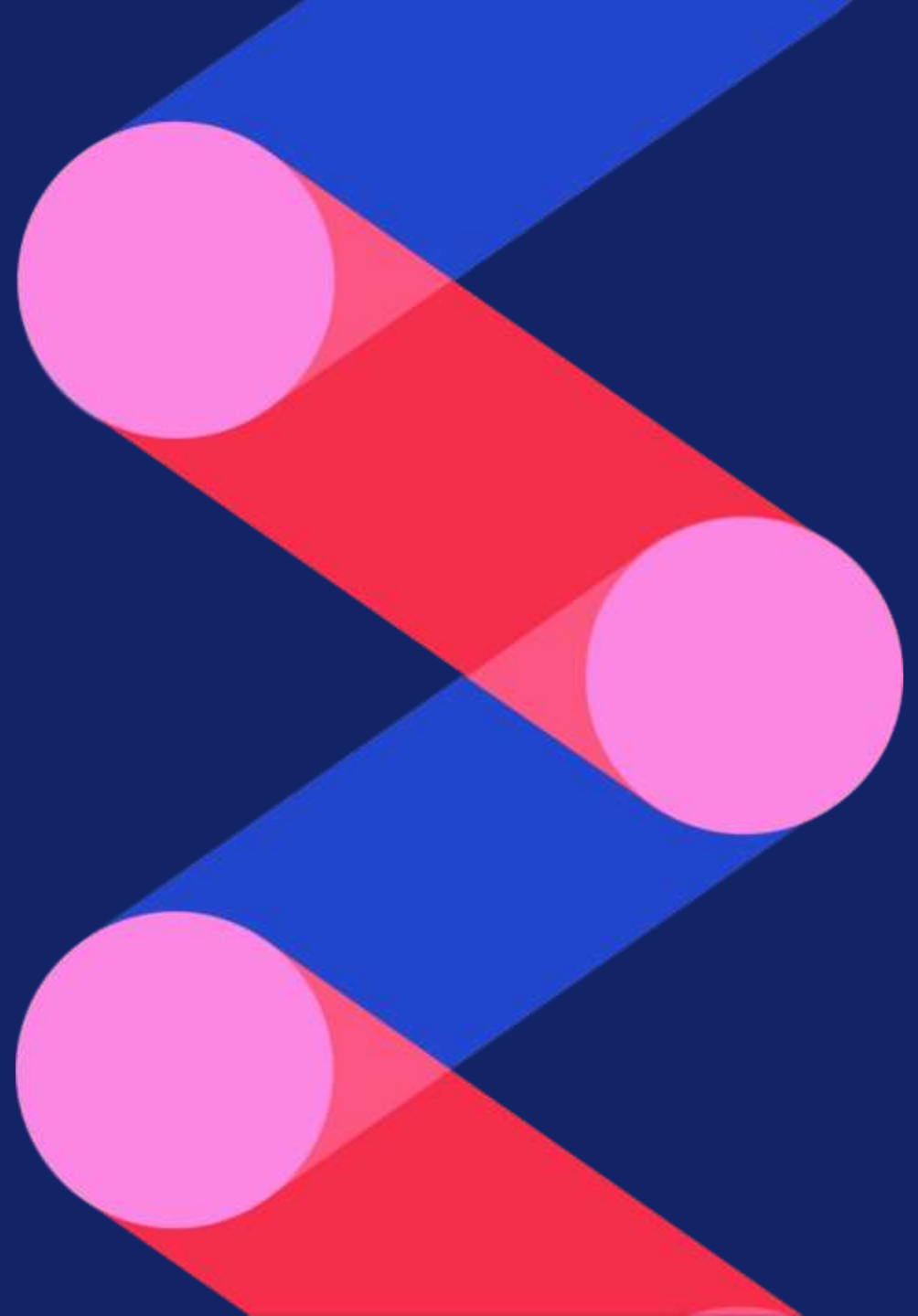
Step 5: Placement



Request an Academic Mentor by contacting Cognition Education using this QR code. You can request specific skills or qualifications, such as a background in a particular subject.

Register your school's interest here:  
[www.ntpacademicmentors.co.uk/schools/register-your-school](http://www.ntpacademicmentors.co.uk/schools/register-your-school)

# School-led tutoring



# School-led tutoring

- **Flexibility** to identify your own tutors
- Tutors may be **current staff**, such as classroom teachers or teaching assistants, or retired, supply or returning teachers
- **School leaders can decide** who will be an appropriate tutor (based on skills and experience)
- A **comprehensive training package** is available from the Education Development Trust, mandatory for staff without QTS

*“NTP has been a fantastic opportunity to identify the specific academic needs of children and support them to boost progress. The small groups are extremely beneficial to all children involved and they have responded very well to tuition. There is a lot of freedom for schools to choose how they wish to access tuition, which is important as the needs of the children are different.”*

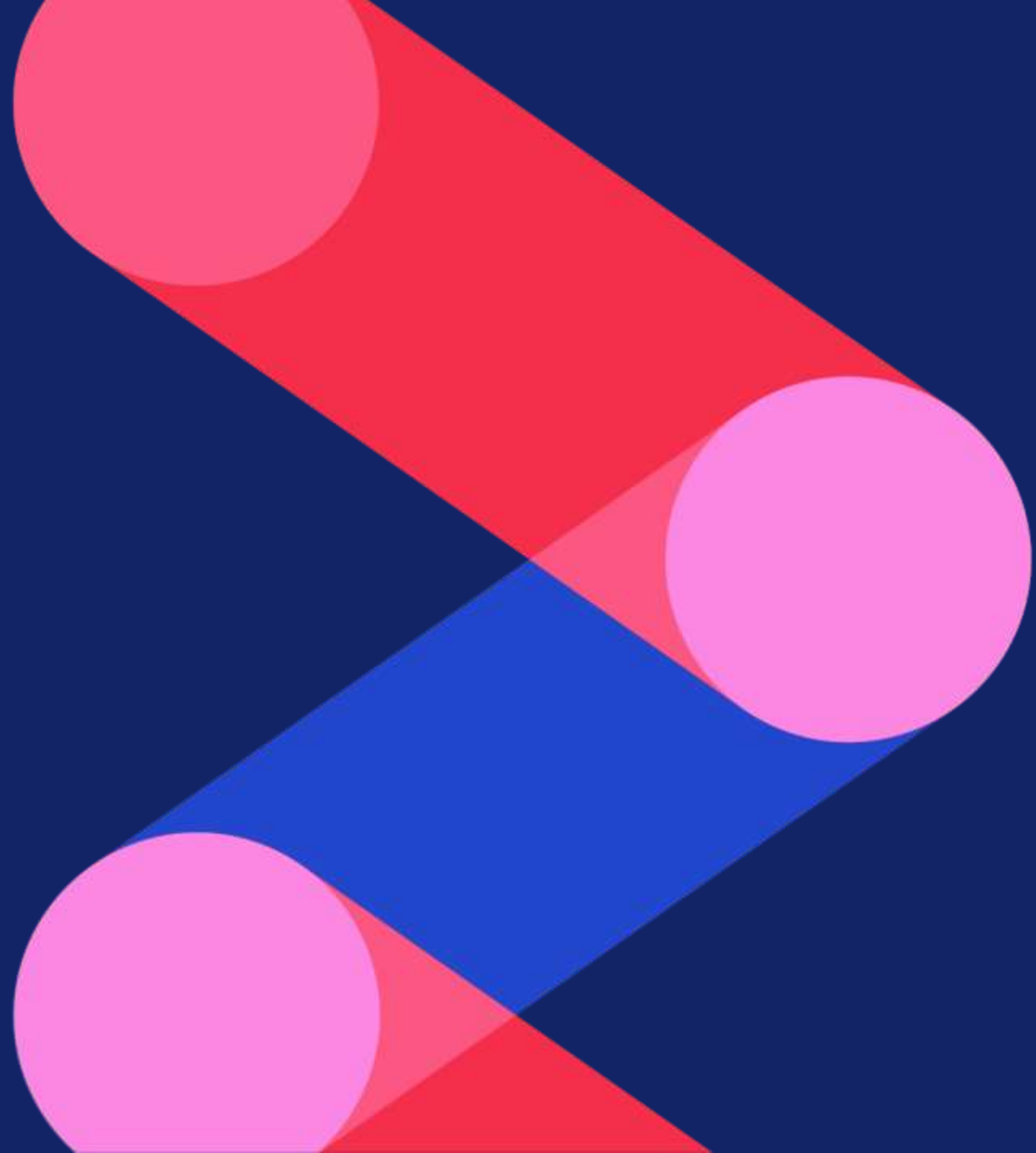
*Headteacher – primary school  
County Durham*

**National  
Tutoring  
Programme**

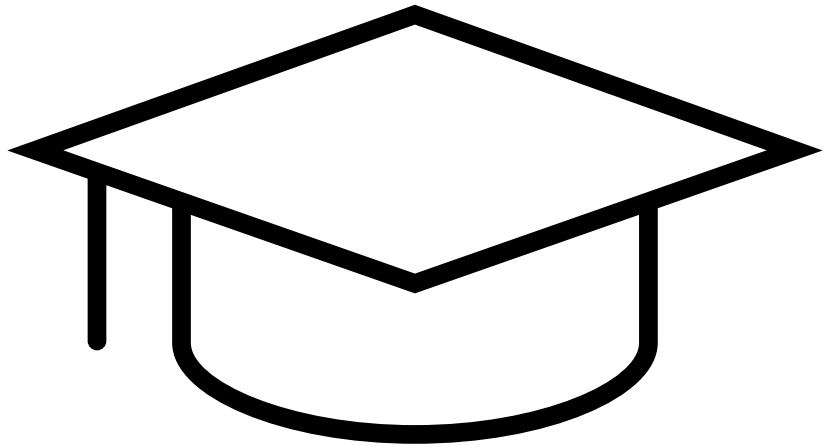


Training delivered by  
 Education  
Development  
Trust

**Training**



# Training - Registration



- Available free of charge to schools and tutors
- Mandatory for all Academic Mentors and school-led tutors without qualified teacher status, unless they completed NTP training in a previous year
- Request training for staff delivering school-led tutoring, by completing the training nomination form:  
<https://nominations.tutortraining.co.uk/registration>
- All academic mentors are registered for training on completion of the recruitment process

For all training enquires, contact Education Development Trust at:  
[tutortraining@educationdevelopmenttrust.com](mailto:tutortraining@educationdevelopmenttrust.com)

**Evidence-based**, flexible online training course

Supports tutors to develop a **robust understanding of tutoring best practice** and **how to deliver tuition flexibly** in school settings

- **Easily accessible**
- User-friendly and easy to navigate; **learning outcomes** clearly sign-posted
- **Discussion board** to encourage networking and sharing of best practice

Continual support of tutoring best practices through:

- Optional phase-specific **seminars**, tutor **focus groups** and panel-led spotlight events
- Development of **communities of practice** for School-Led Tutors and Academic Mentors



# Training options

## Pathway Options

1. Refresher (for SLTs and AMs from previous years)
2. SLT Experienced Practitioner QTS
3. SLT Early Career Practitioner QTS
4. SLT Primary Non-QTS
5. SLT Secondary Non-QTS
6. AMs QTS
7. AMs Non-QTS

## Assessment & Certification

- Multiple-choice questions assessment written by the Chartered College of Teaching.
- Pass rate of 80% or more will secure certification as an SLT/AM and **credits** towards **Chartered Teacher Status** with the Chartered College of Teaching if the tutor holds QTS.
- Participants will be given the opportunity to complete a further advanced assessment which will provide SLTs and AMs with the Chartered College of Teaching's Professional Knowledge award.

# Registration

- Access to research, best-practice guidance, practical tools
- Training course handbooks, training pathways
- Supports planning and implementing high-quality tutoring provision
- Portal accessible to registered school leaders



**Tutoring Excellence:  
Tailored seminars for tutors**

**Bespoke seminars**  
that will help your schools to achieve tutoring excellence.

**Designed for maximum impact**  
on pupil learning across your schools.

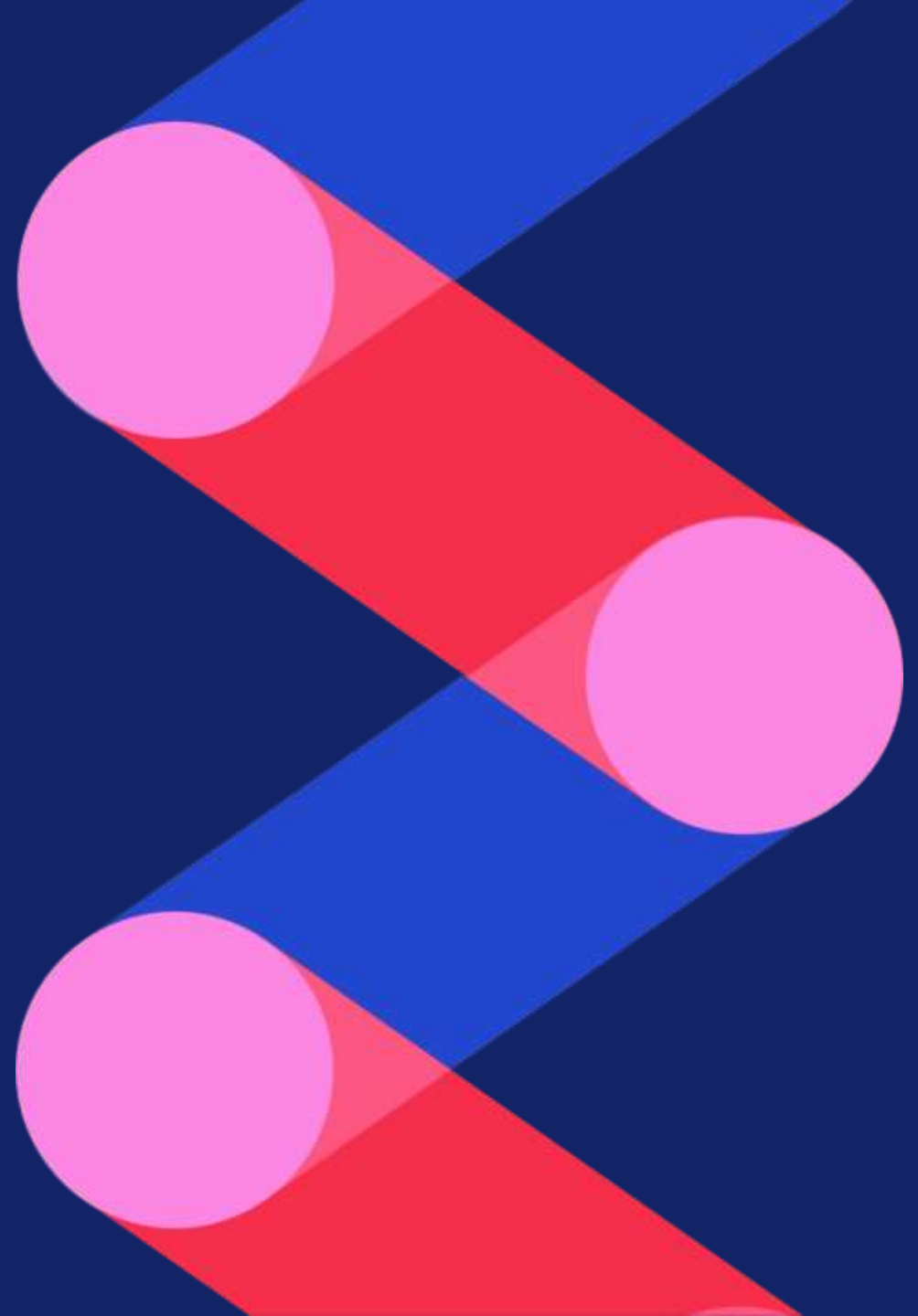
**Free**  
as part of the National Tutoring Programme.

Register your interest

Email: [tutortraining@educationdevelopmenttrust.com](mailto:tutortraining@educationdevelopmenttrust.com)

National Tutoring Programme | Department for Education | Training delivered by Education Development Trust

# Tuition partners



# Tuition partners

*“We are currently using two tuition partners, and both have been great to work with... we have seen a decrease in the number of students that were identified as below target. This is a huge positive for the school, as there is some evidence to suggest that the tutoring has supported children in their behaviour and attitude towards learning.”*

Headteacher – secondary school,  
Hillingdon

- Organisations are **quality assured** by Tribal (on behalf of DfE) - you may **only** use NTP funding on quality assured tuition partners
- Use our [Find a Tuition Partner service](#)
- Tuition can take place **in-person** or **online**
- **Agree your own contract** and keep accurate records
- **Request a tutor who specialises** in supporting pupils with SEND, pupils who speak English as an additional language or subject-specific support

# Benefits of a tuition partner

All TPs have undergone a rigorous quality assurance process

Reduce workload and admin burden on teachers

Flexible resource - TPs have a large bank of tutors, meaning support can be provided at pace

Can support schools to plan, coordinate and evaluate tutoring

Tutors can offer specialist support tailored to pupil needs

Additional resource capacity, dedicated to helping close the attainment gap



Find a quality assured tuition partner at [www.find-tuition-partner.service.gov.uk](http://www.find-tuition-partner.service.gov.uk)

# Next steps



Tell us your tutoring plans  
for 2023/24



Read the [NTP Guidance for 2023 to 2024](#)

Check your [funding allocation](#)

Use the [NTP calculator tool](#) to help track your tutoring

- **Tuition Partners:** Use [Find a tuition partner](#) to choose the most appropriate tuition partner for your school
- **Academic Mentors:** Contact Cognition to [request an academic mentor](#)
- **School-led Tutoring:** nominate your staff for training from [Education Development Trust](#)

Submit your [Year-End Statement](#)

View the Year-End Statement [technical guidance and video](#)

**Contact our dedicated support team:**

[tutoring.support@service.education.gov.uk](mailto:tutoring.support@service.education.gov.uk)

or 0300 373 0891 (Monday to Friday, 8.30am to 5pm)

[Sign up to our tutoring newsletter](#)

Read the [NFER](#) and [EEF](#) guides on the effective ways to implement tutoring